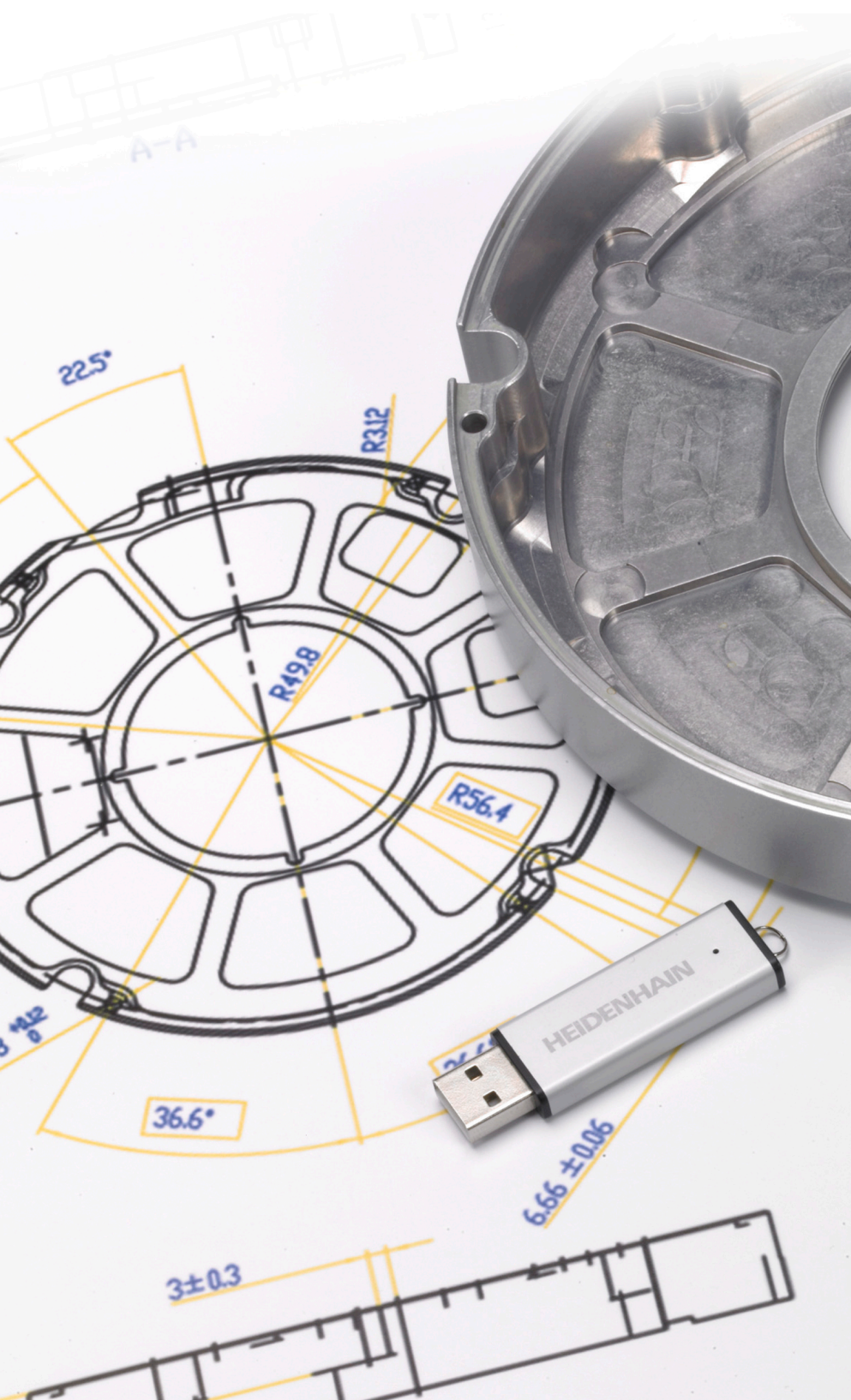




HEIDENHAIN



NC Solutions

Set of drawings 13004

English (en)
6/2018

1 Set of drawings_13004

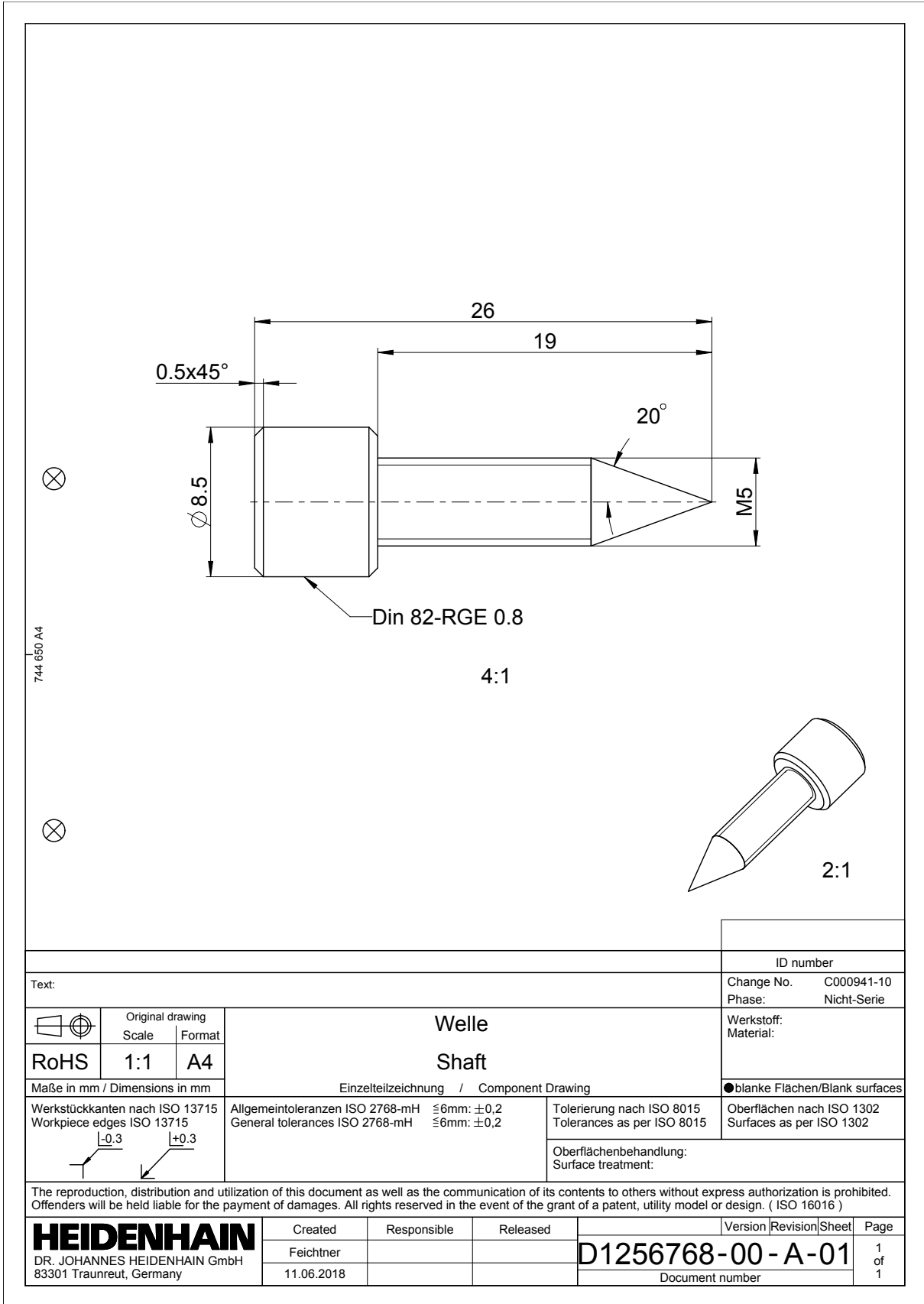
Parts list for compressed air motor

Production parts

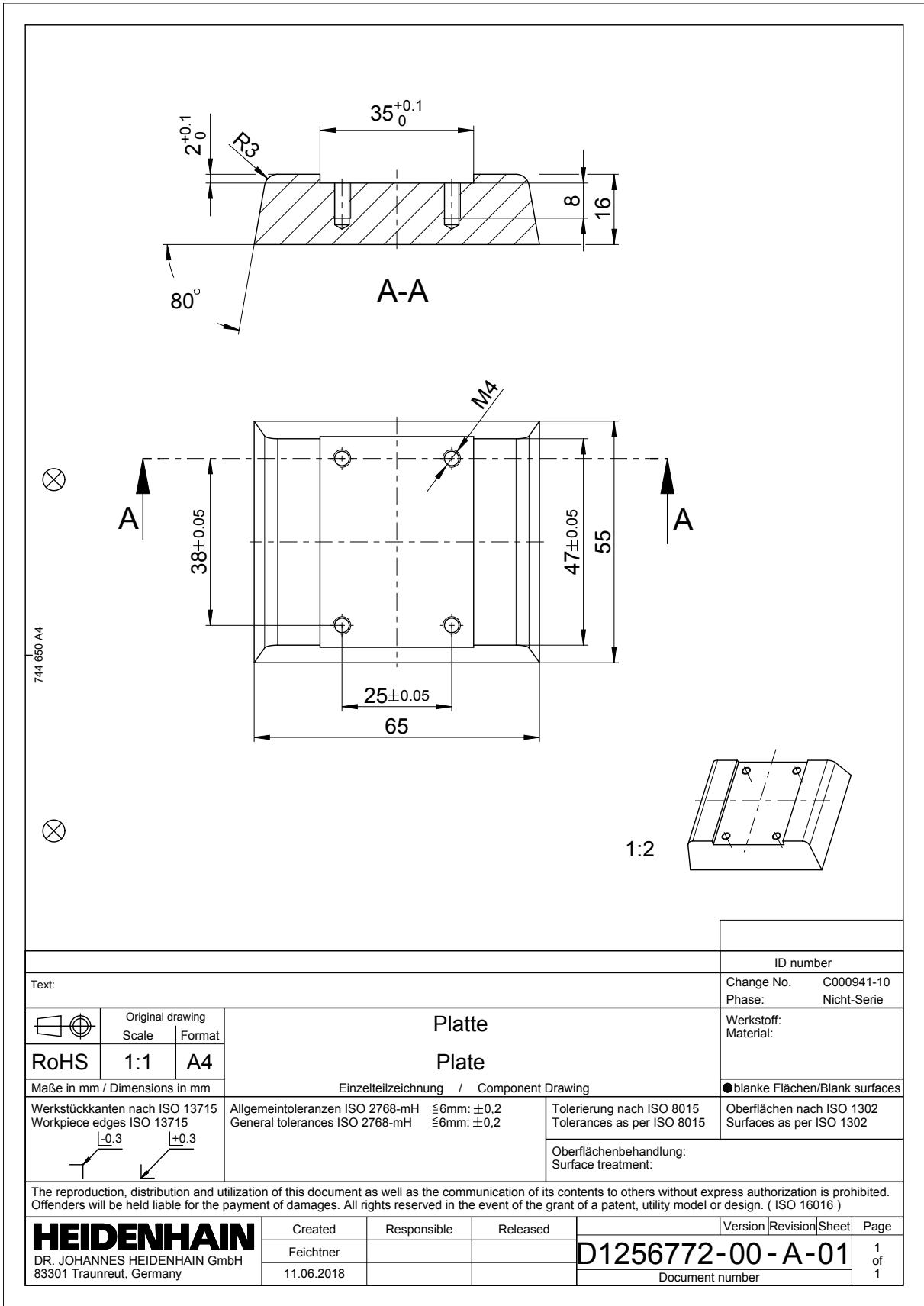
Quantity	Designation	Material	Document number
1	Shaft	CW508L	D1256768-00
1	Plate	ENAW 2007	D1256772-00
1	Piston	CW508L	D1256799-00
1	Washer	CW508L	D1256806-00
1	Shaft	CW508L	D1256807-00
1	Plate	ENAW 2007	D1256809-00
1	Housing	PMMA	D1256812-00
1	Plate	ENAW 2007	D1256815-00
1	Washer	CW508L	D1256823-00
1	Shaft	CW508L	D1256826-00
1	Housing cover	PMMA	D1256827-00

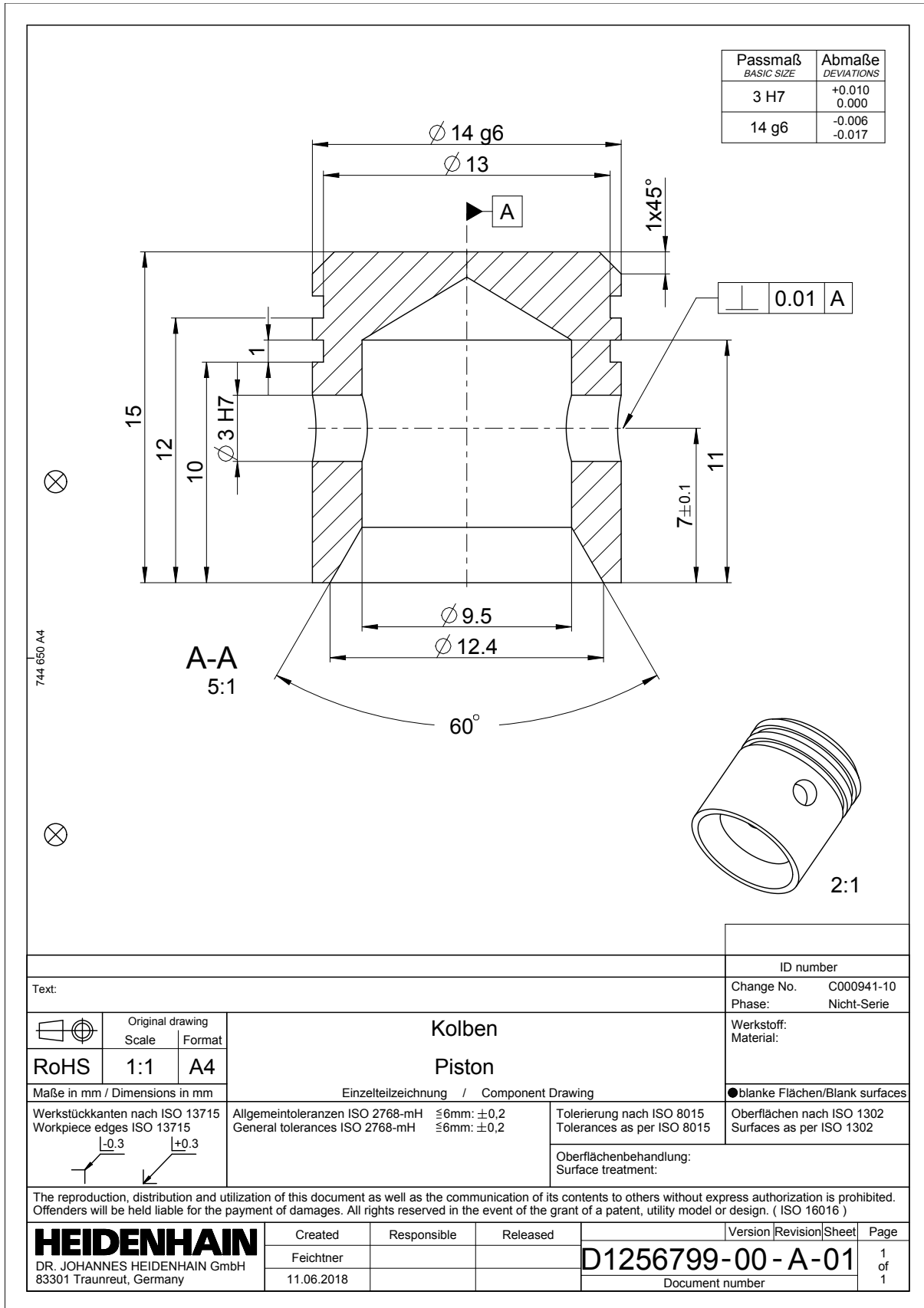
Standardized parts

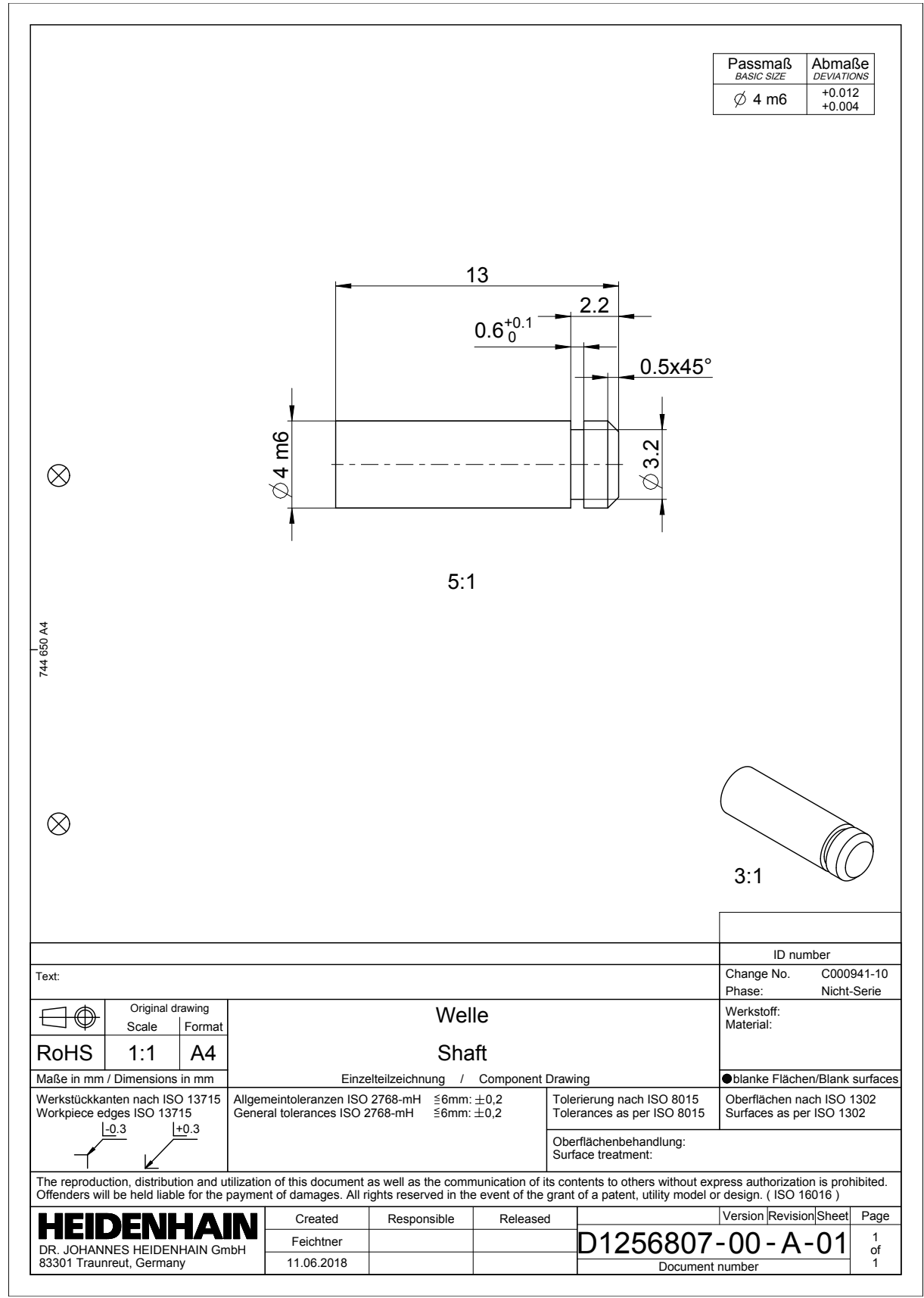
Quantity	Designation	Standard	Comment
2	M4 x 18 cylinder head screw	DIN EN ISO 4762	Hexagon socket
4	M4 x 6 cylinder head screw	DIN EN ISO 4762	Hexagon socket
4	M3 x 8 countersunk screw	DIN EN ISO 7046-1	Hexagon socket
2	M4 x 6 setscrew	DIN EN 27434	With point
1	Cylindrical pin Ø3 x 12 mm	DIN EN ISO 8734	
1	Lock washer Ø 3.2	DIN 6799 (3.2)	
1	Sealant (e.g., silicone)		Sealing groove for motor housing

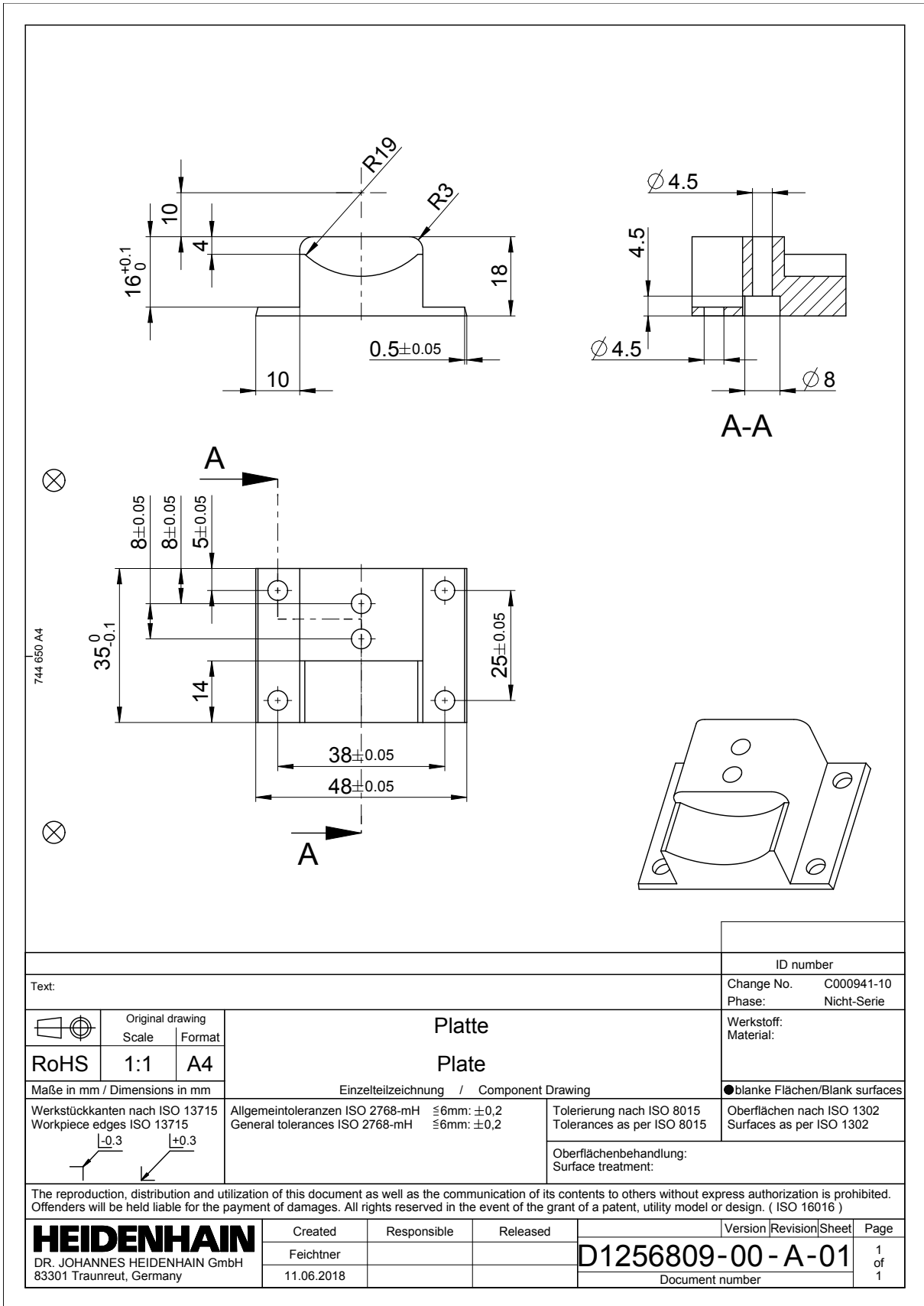


Text:		ID number
Change No. C000941-10		Phase: Nicht-Serie
Werkstoff: Material:		
Maße in mm / Dimensions in mm		●blanke Flächen/Blank surfaces
Werkstückkanten nach ISO 13715 Workpiece edges ISO 13715	Allgemeintoleranzen ISO 2768-mH General tolerances ISO 2768-mH	Tolerierung nach ISO 8015 Tolerances as per ISO 8015
± 0.3 ± 0.3	$\leq 6\text{mm}: \pm 0,2$ $\leq 6\text{mm}: \pm 0,2$	Oberflächenbehandlung: Surface treatment:
The reproduction, distribution and utilization of this document as well as the communication of its contents to others without express authorization is prohibited. Offenders will be held liable for the payment of damages. All rights reserved in the event of the grant of a patent, utility model or design. (ISO 16016)		
HEIDENHAIN DR. JOHANNES HEIDENHAIN GmbH 83301 Traunreut, Germany	Created	Responsible
	Released	Version
Feichtner	11.06.2018	
D1256768-00 - A-01 Document number		Revision Sheet Page 1 of 1

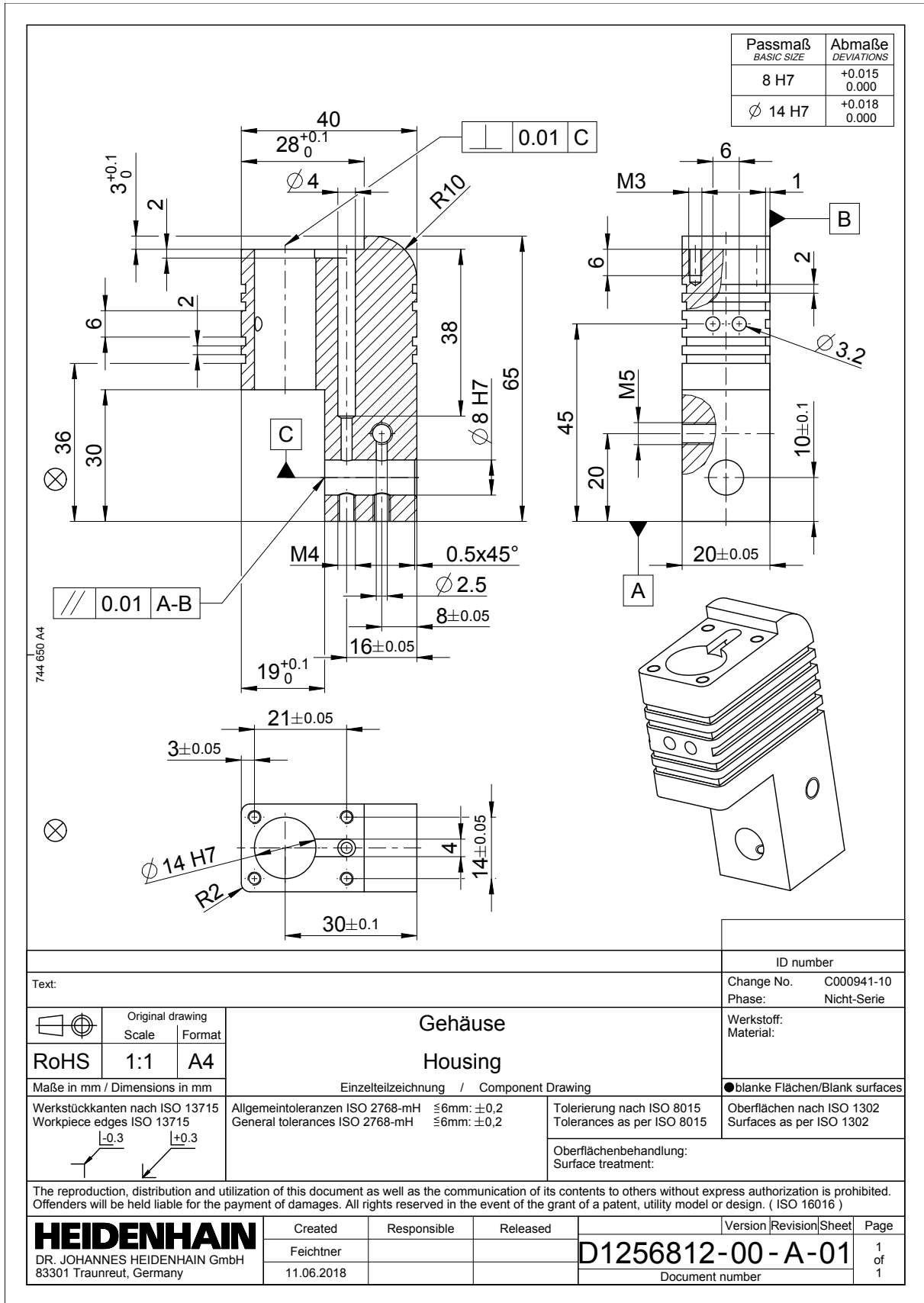








Text:		ID number	
		Change No.	C000941-10
		Phase:	Nicht-Serie
		Werkstoff:	Material:
		●blanke Flächen/Blank surfaces	
Maße in mm / Dimensions in mm		Einzelteilzeichnung / Component Drawing	
Werkstückkanten nach ISO 13715 Workpiece edges ISO 13715		Allgemeintoleranzen ISO 2768-mH General tolerances ISO 2768-mH	Tolerierung nach ISO 8015 Tolerances as per ISO 8015
		$\leq 6\text{mm}: \pm 0,2$ $\leq 6\text{mm}: \pm 0,2$	Oberflächen nach ISO 1302 Surfaces as per ISO 1302
		Oberflächenbehandlung: Surface treatment:	
The reproduction, distribution and utilization of this document as well as the communication of its contents to others without express authorization is prohibited. Offenders will be held liable for the payment of damages. All rights reserved in the event of the grant of a patent, utility model or design. (ISO 16016)			
HEIDENHAIN DR. JOHANNES HEIDENHAIN GmbH 83301 Traunreut, Germany	Created	Responsible	Released
	Feichtner		
	11.06.2018		
		Version	Revision
		Sheet	
		Page	
		D1256809-00 - A-01	
		Document number	
		1 of 1	

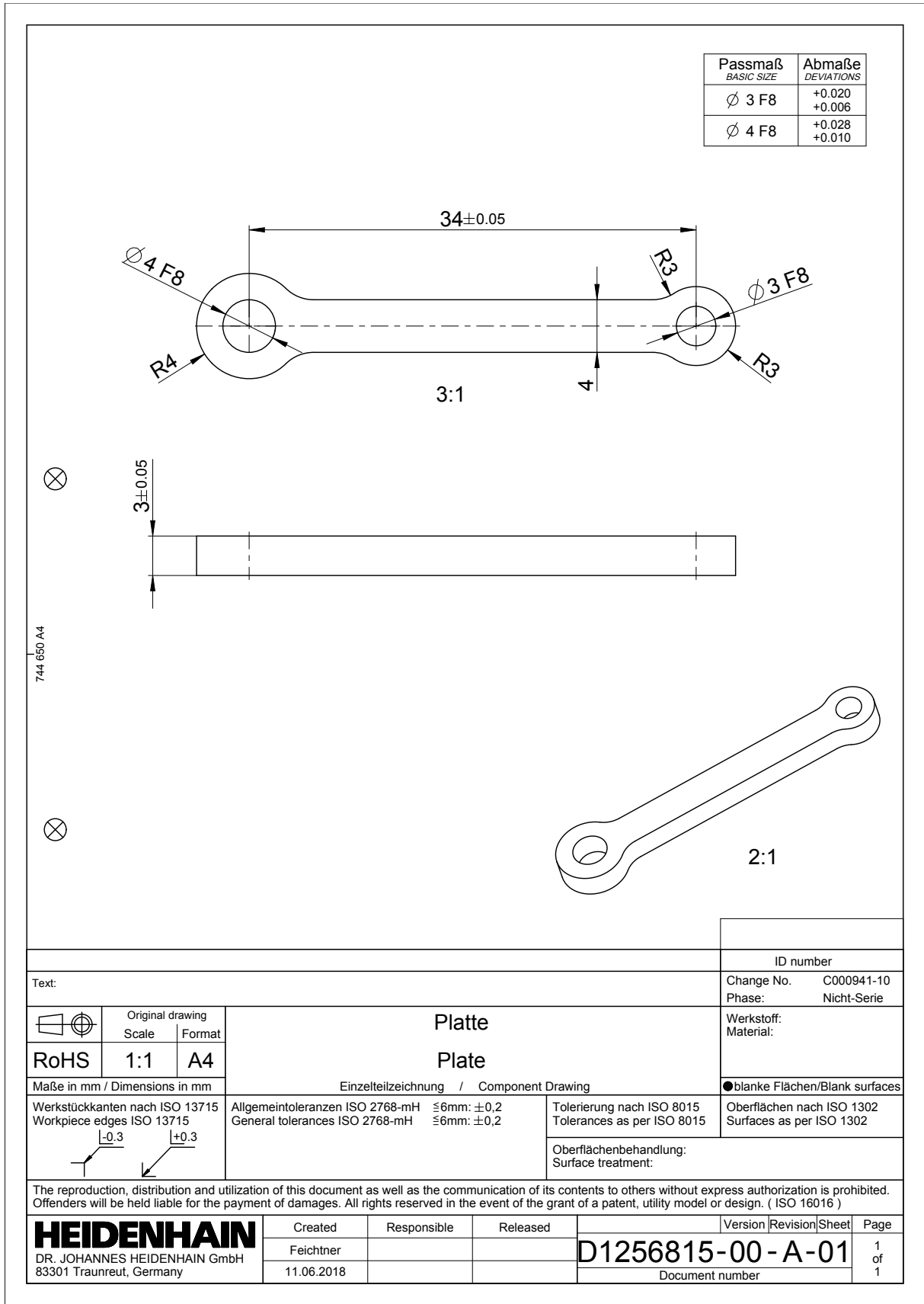


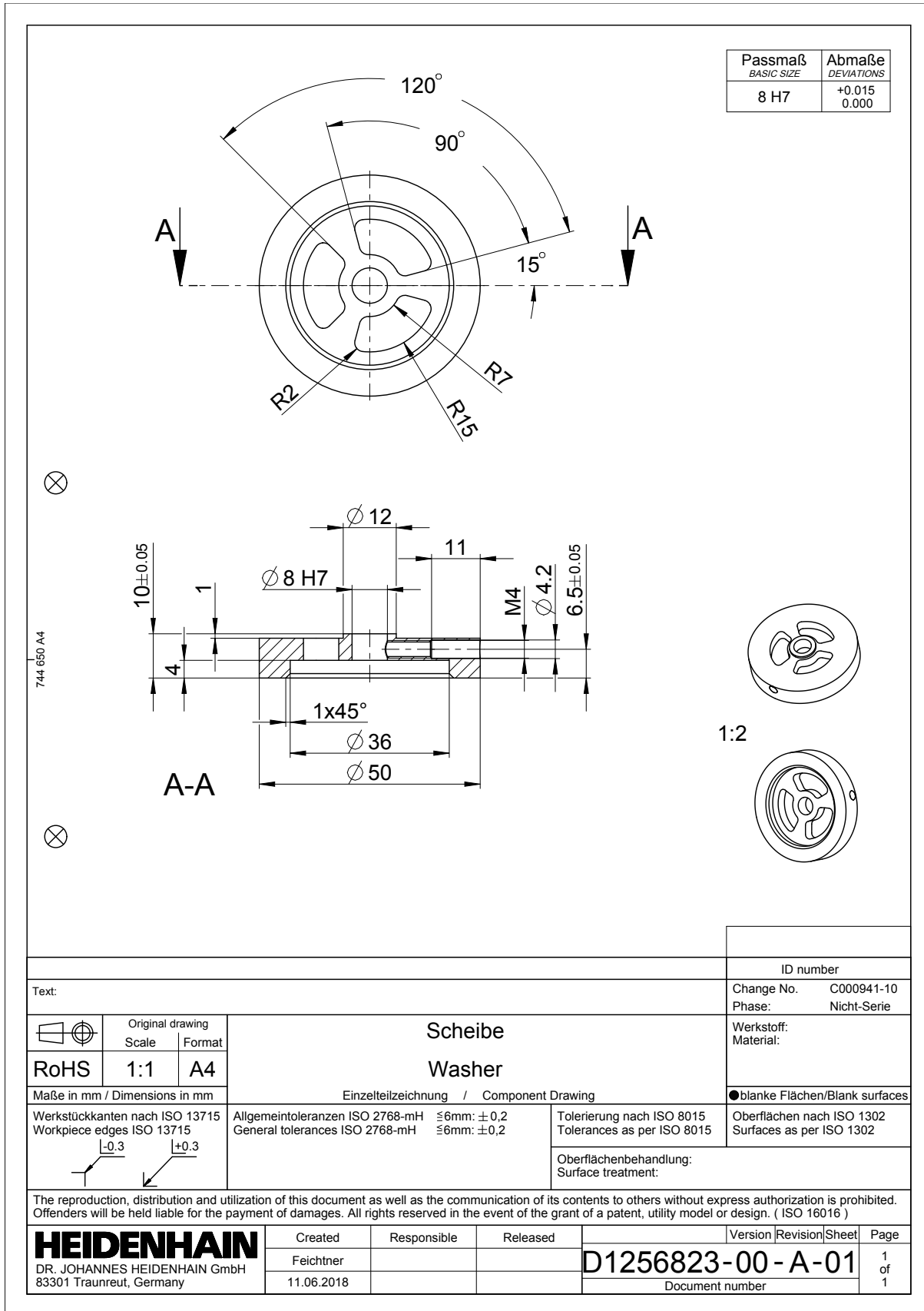
744 650 A4

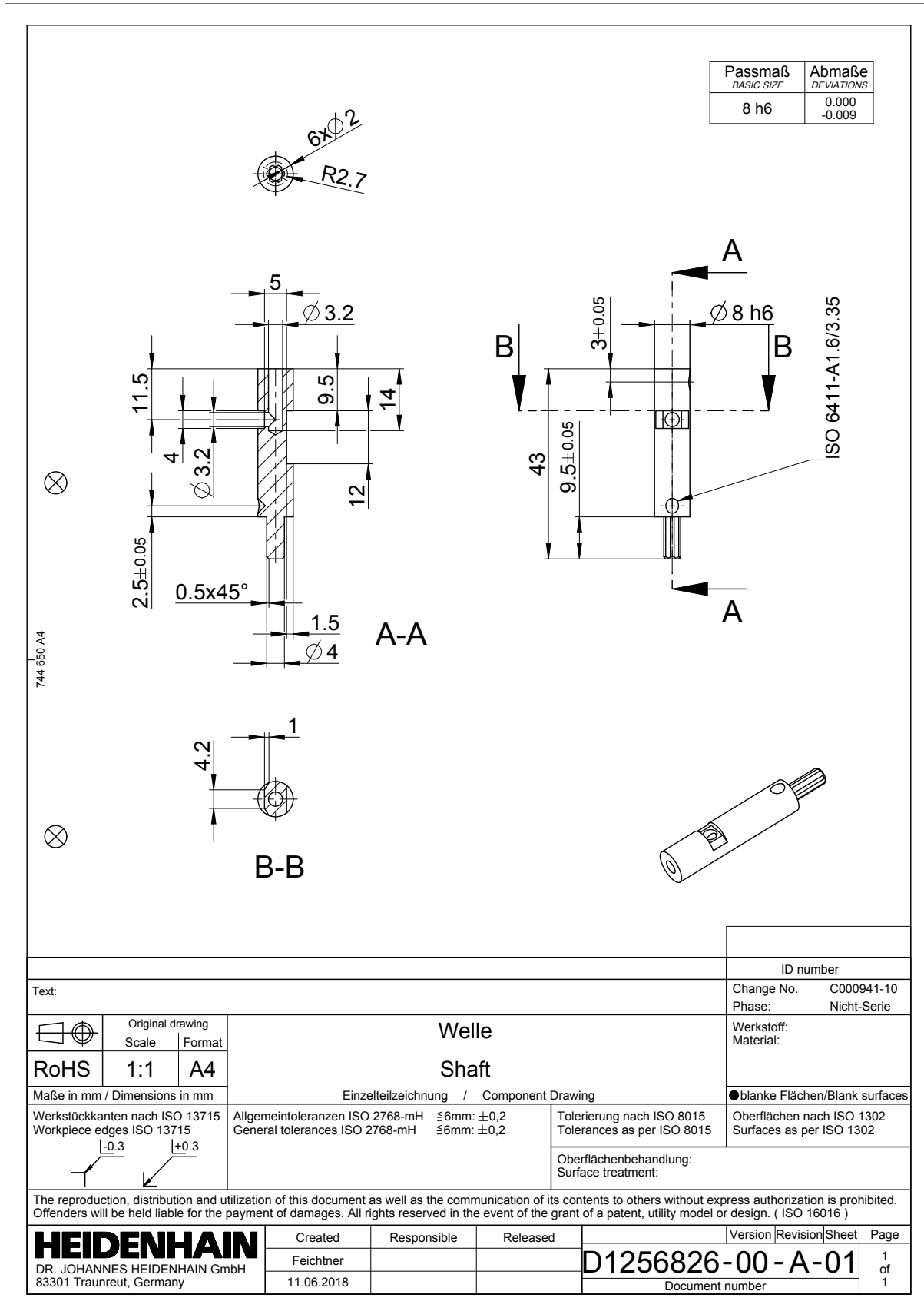
Text:			ID number							
			Change No.	C000941-10						
			Phase:	Nicht-Serie						
<table border="1"> <tr> <td></td> <td>Original drawing</td> <td>Format</td> </tr> <tr> <td></td> <td>Scale</td> <td></td> </tr> </table>				Original drawing	Format		Scale		Gehäuse Housing	
	Original drawing	Format								
	Scale									
<table border="1"> <tr> <td>RoHS</td> <td>1:1</td> <td>A4</td> </tr> </table>			RoHS	1:1	A4					
RoHS	1:1	A4								
Maße in mm / Dimensions in mm			Einzelteilzeichnung / Component Drawing							
Werkstückkanten nach ISO 13715 Workpiece edges ISO 13715 			Tolerierung nach ISO 8015 Tolerances as per ISO 8015 Oberflächenbehandlung: Surface treatment:							
Allgemeintoleranzen ISO 2768-mH $\leq 6\text{mm}$: $\pm 0,2$ General tolerances ISO 2768-mH $\leq 6\text{mm}$: $\pm 0,2$			Oberflächen nach ISO 1302 Surfaces as per ISO 1302							

The reproduction, distribution and utilization of this document as well as the communication of its contents to others without express authorization is prohibited. Offenders will be held liable for the payment of damages. All rights reserved in the event of the grant of a patent, utility model or design. (ISO 16016)

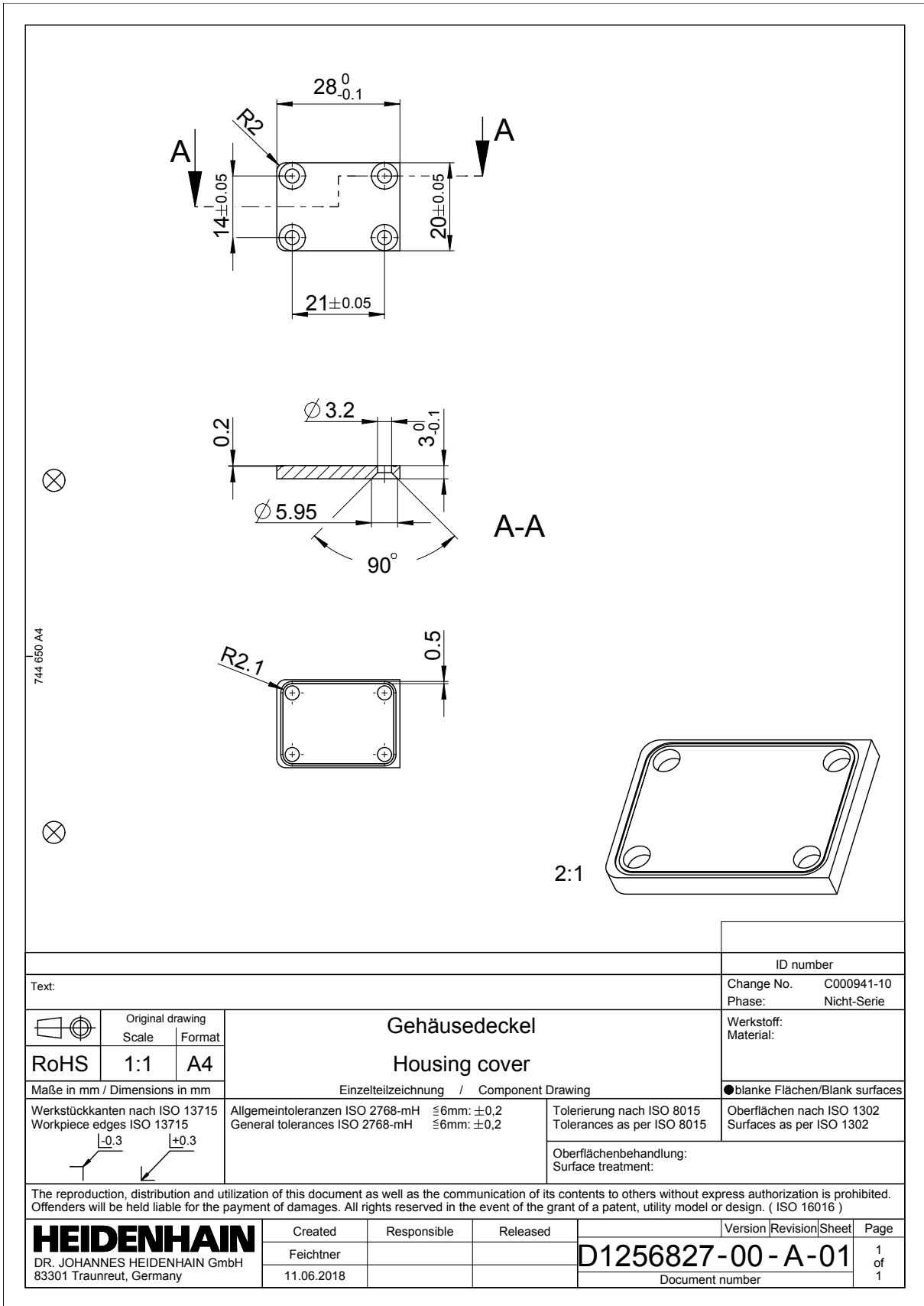
HEIDENHAIN DR. JOHANNES HEIDENHAIN GmbH 83301 Traunreut, Germany	Created	Responsible	Released	Version	Revision	Sheet	Page
	Feichtner			D1256812-00-A-01			1 of 1
	11.06.2018			Document number			1

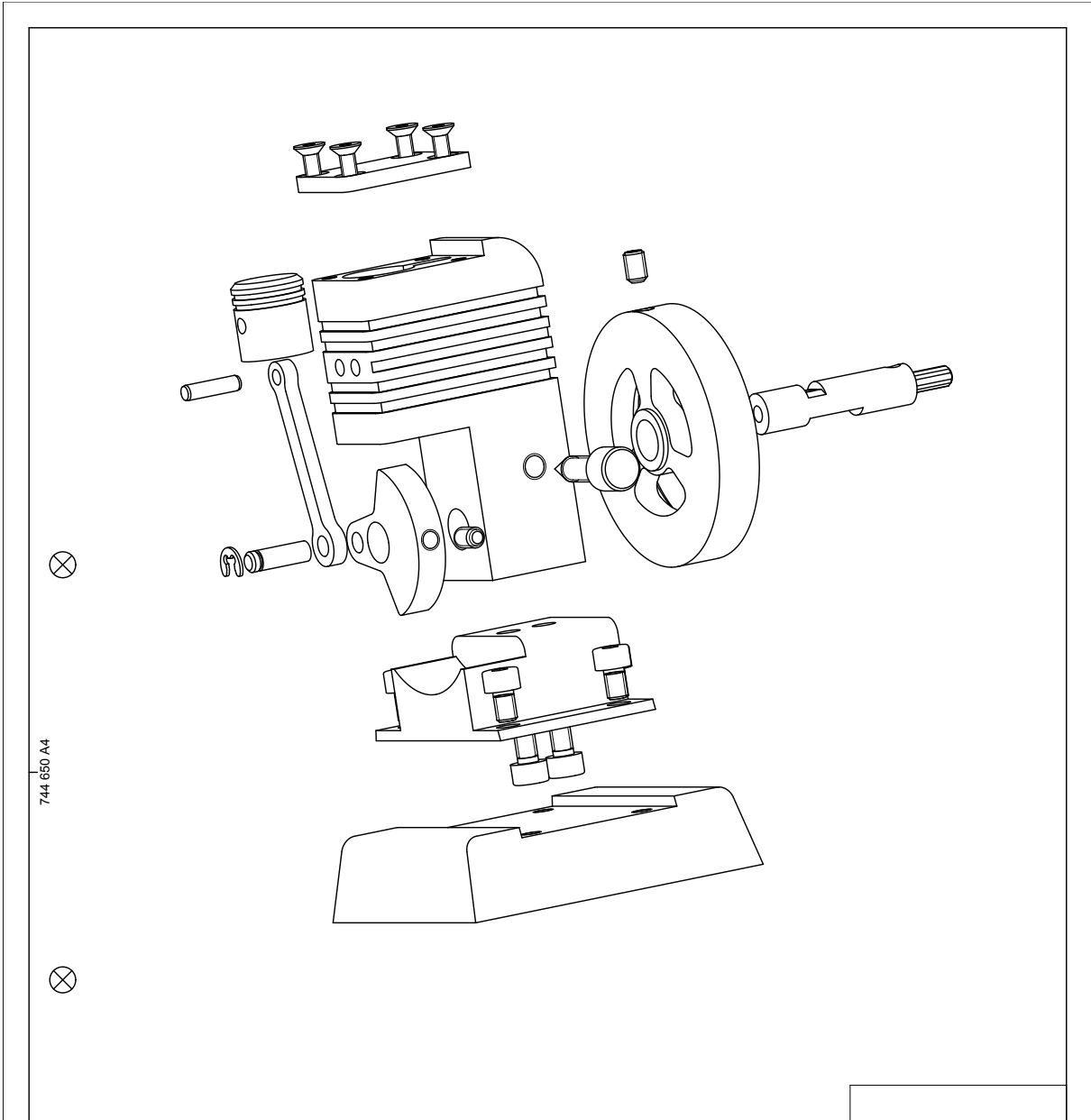






Text:		ID number							
Change No. C000941-10		Phase: Nicht-Serie							
Werkstoff: Material:		●blanke Flächen/Blank surfaces							
<table border="1"> <tr> <th>Original drawing</th> <th>Scale</th> <th>Format</th> </tr> <tr> <td>RoHS</td> <td>1:1</td> <td>A4</td> </tr> </table>	Original drawing	Scale	Format	RoHS	1:1	A4	<p>Welle Shaft</p> <p>Einzelteilzeichnung / Component Drawing</p>		<p>Tolerierung nach ISO 8015 Tolerances as per ISO 8015</p> <p>Oberflächenbehandlung: Surface treatment:</p>
Original drawing	Scale	Format							
RoHS	1:1	A4							
<p>Maße in mm / Dimensions in mm</p> <p>Werkstückkanten nach ISO 13715 Workpiece edges ISO 13715</p> <p>\pm0.3</p> <p>\pm0.3</p>	<p>Allgemeintoleranzen ISO 2768-mH \leq6mm: \pm0,2</p> <p>General tolerances ISO 2768-mH \leq6mm: \pm0,2</p>	<p>Oberflächen nach ISO 1302 Surfaces as per ISO 1302</p>							
<p>The reproduction, distribution and utilization of this document as well as the communication of its contents to others without express authorization is prohibited. Offenders will be held liable for the payment of damages. All rights reserved in the event of the grant of a patent, utility model or design. (ISO 16016)</p>									
<p>HEIDENHAIN DR. JOHANNES HEIDENHAIN GmbH 83301 Traunreut, Germany</p>	Created	Responsible	Released						
	Feichtner								
11.06.2018	D1256826-00-A-01		Version Revision Sheet Page						
Document number			1 of 1						





744 650 A4

Text:		ID number	
Change No. C000941-10		Phase: Nicht-Serie	
Werkstoff: Material:			
	Original drawing Scale Format	Motor motor	
RoHS	1:1 A4		
Maße in mm / Dimensions in mm		Einzelteilzeichnung / Component Drawing	
Werkstückkanten nach ISO 13715 Workpiece edges ISO 13715 		Allgometoleranzen ISO 2768-mH ≤6mm: ±0,2 General tolerances ISO 2768-mH ≤6mm: ±0,2	Tolerierung nach ISO 8015 Tolerances as per ISO 8015 Oberflächenbehandlung: Surface treatment:
		●blanke Flächen/Blank surfaces	
		Oberflächen nach ISO 1302 Surfaces as per ISO 1302	
The reproduction, distribution and utilization of this document as well as the communication of its contents to others without express authorization is prohibited. Offenders will be held liable for the payment of damages. All rights reserved in the event of the grant of a patent, utility model or design. (ISO 16016)			
HEIDENHAIN DR. JOHANNES HEIDENHAIN GmbH 83301 Traunreut, Germany	Created	Responsible	Released
	Feichtner 18.06.2018		
		D1256856-00 - A-01	
		Document number	
		Version	Revision Sheet Page
			1 of 1

